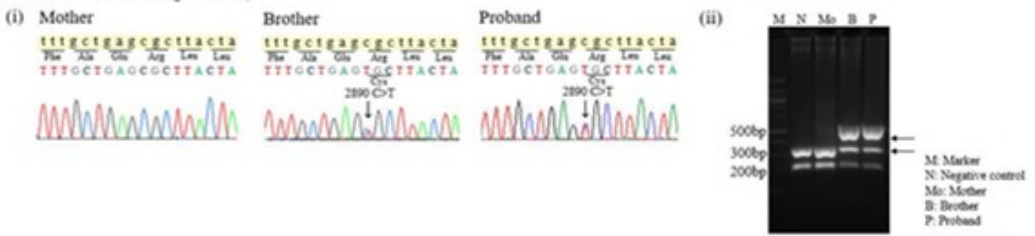
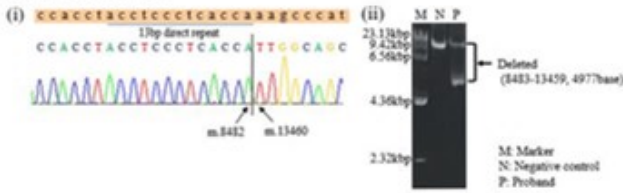


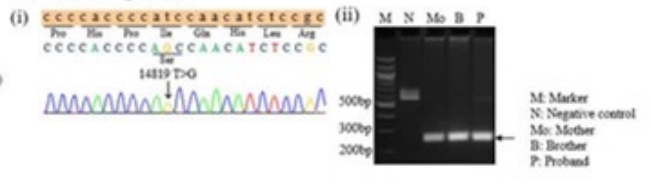
d
POLG : c. 2890 C>T (p. R964C)



e
m.8483-13459del14977



f
m.14819 T>G (p. I25S)



g

Symptoms, Signs, and Findings	Gerald Pfeffer, et al (2011) n=40	Present case		
		Mother	Brother	Proband
Onset	39 (1-50)	25	n/a	47
Present age	55 (27-74)	83	61	58
Neurological system				
Ptosis	100%	++	--	++
Ophthalmoplegia	100%	++	+	++
Double vision	63%	--	--	+
Muscle weakness	63%	+	--	+
Sensorineural hearing loss	48%	--	--	--
Fatigue	43%	--	--	+
Migraine	40%	--	--	--
Neuropsychiatric disorder	38%	--	--	--
Exertional myalgia	35%	--	--	--
Polyneuropathy	33%	--	--	--
Ataxia	18%	--	--	--