

Figure 1

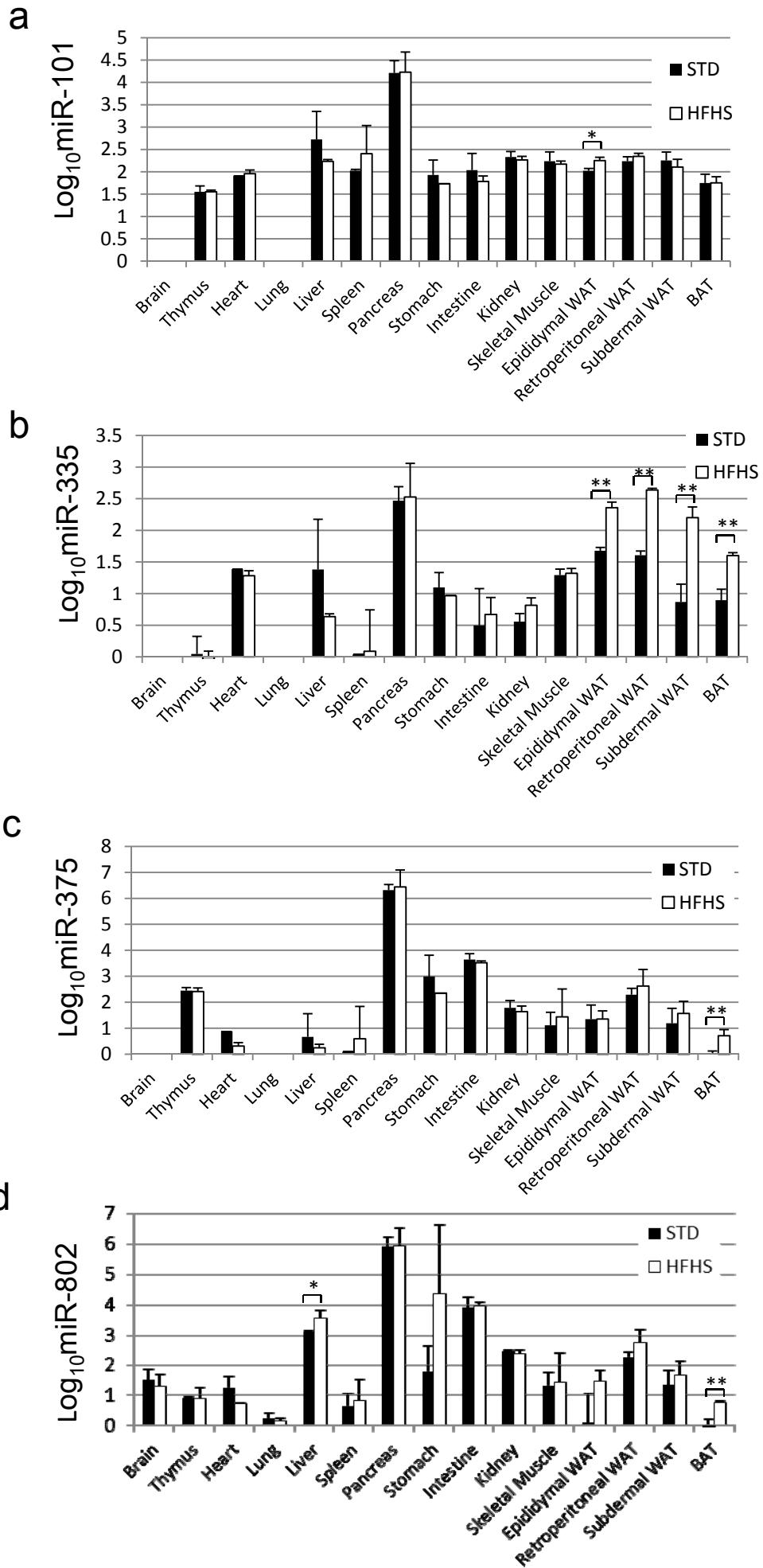


Figure 2

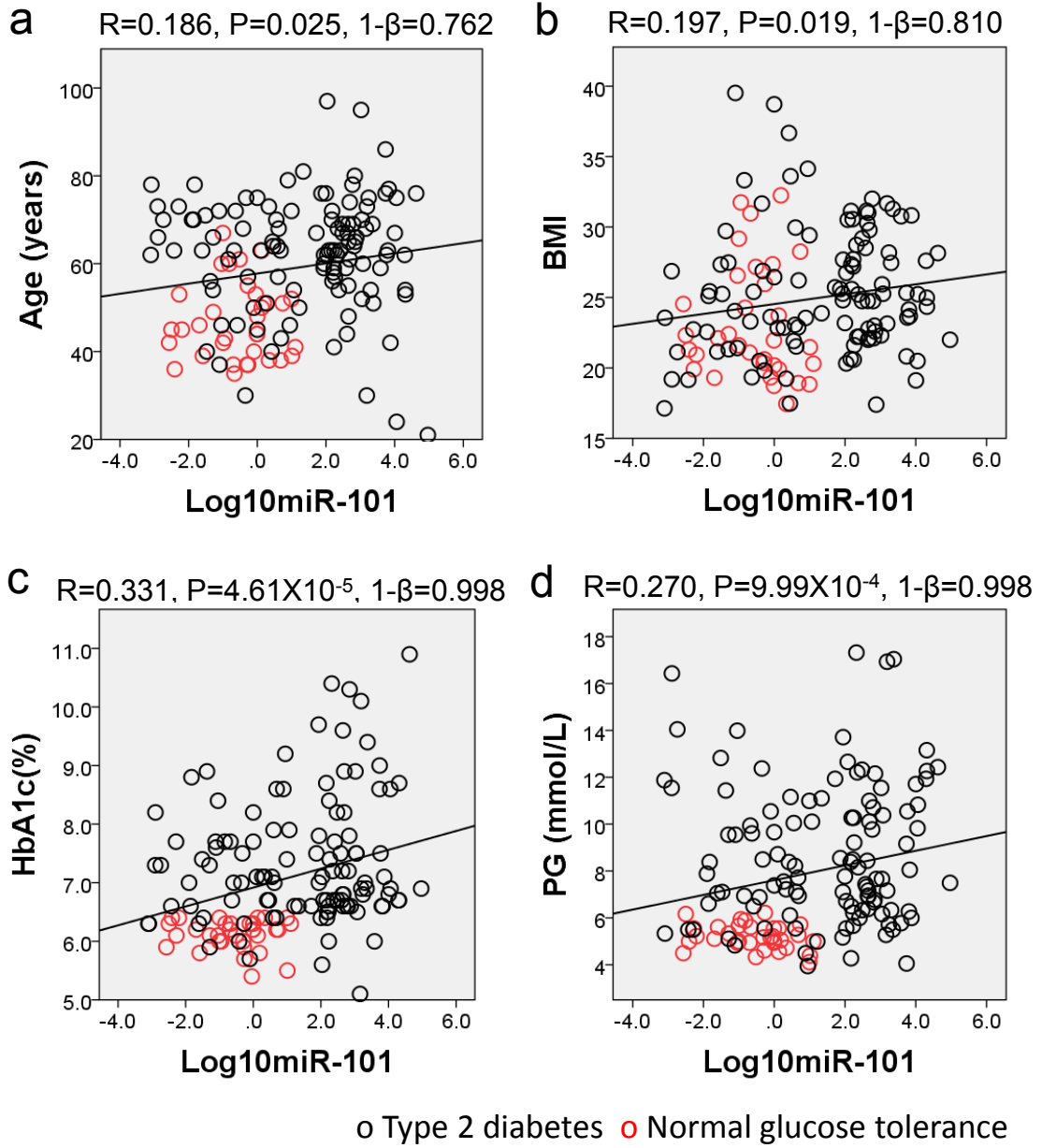


Figure 3

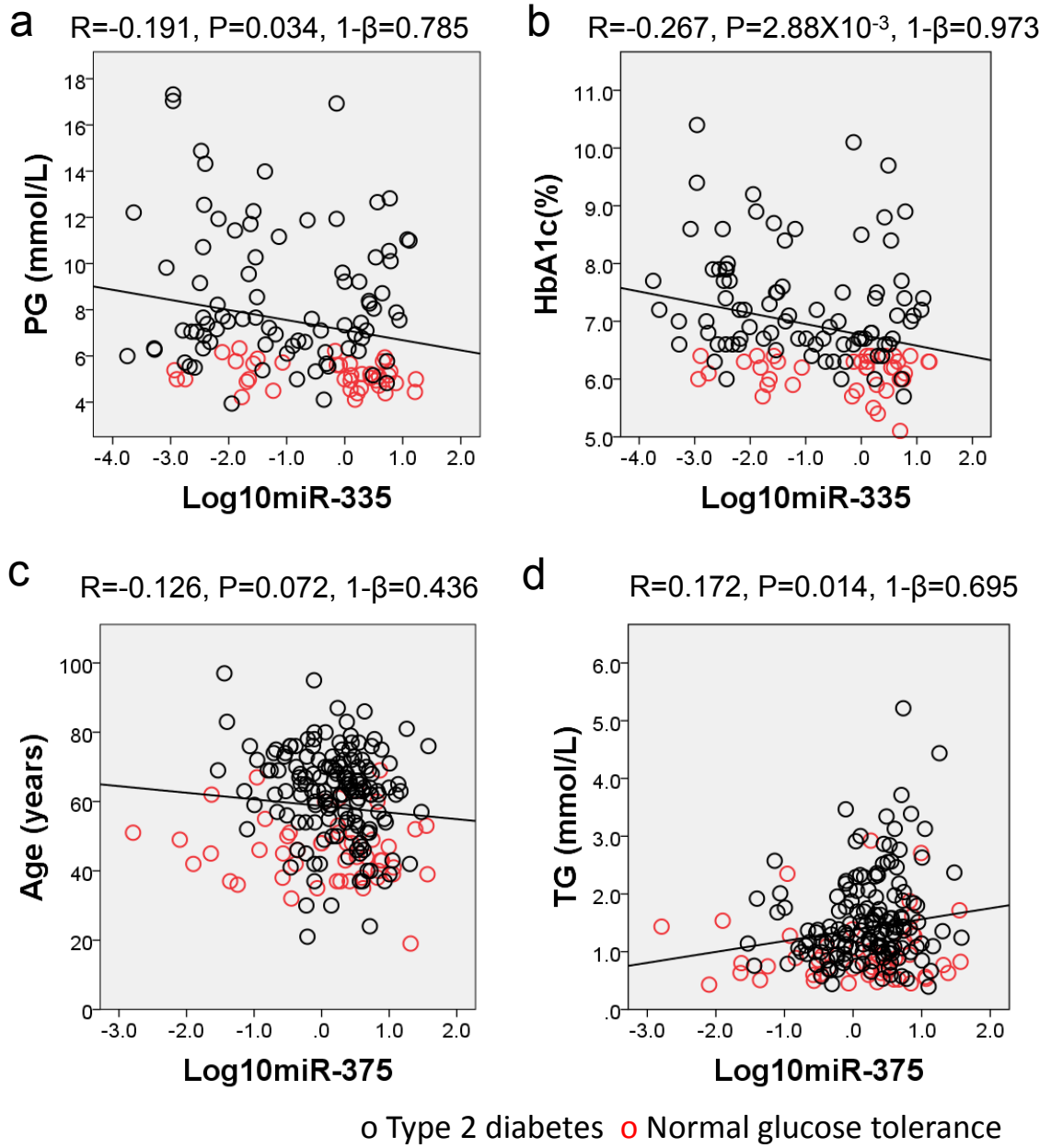
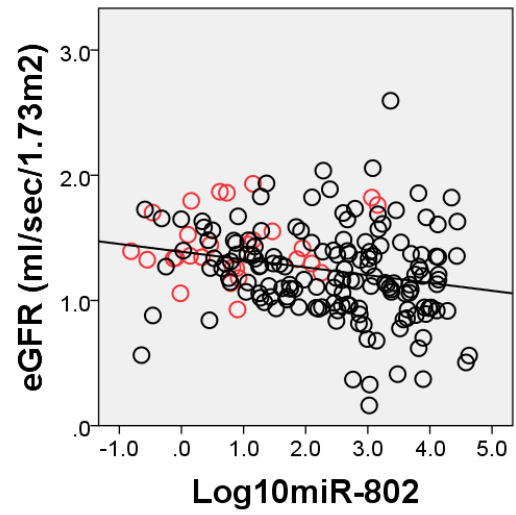
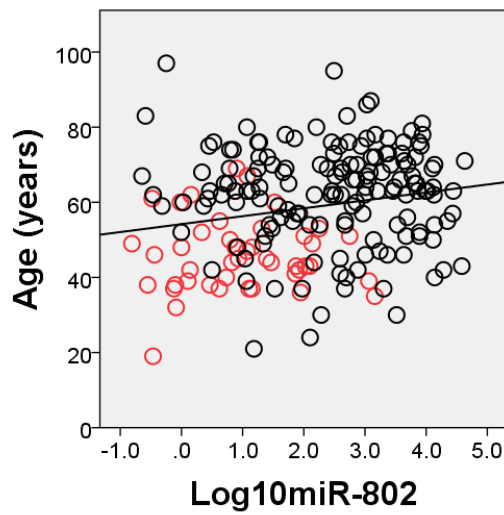
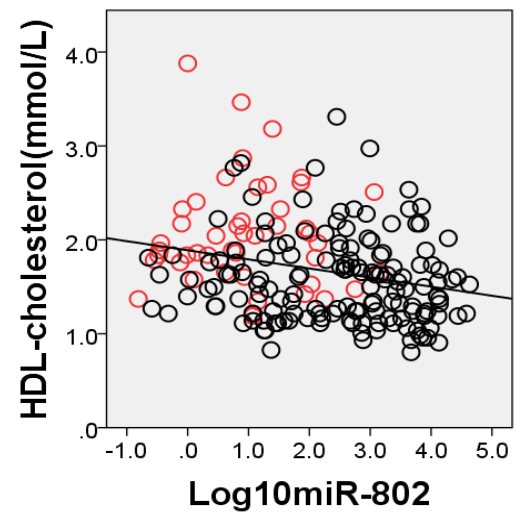
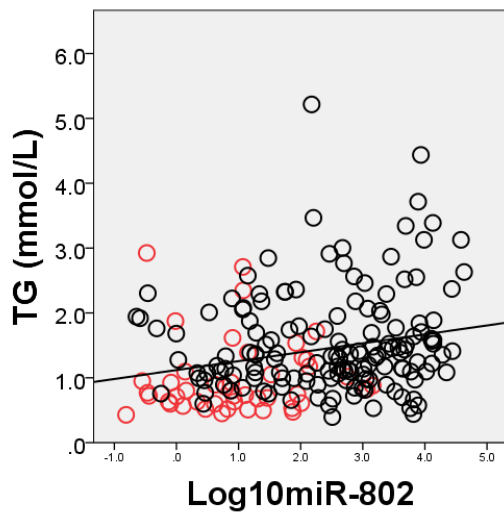


Figure 4

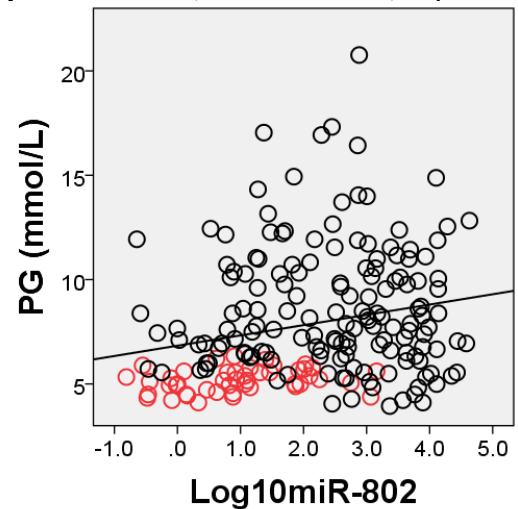
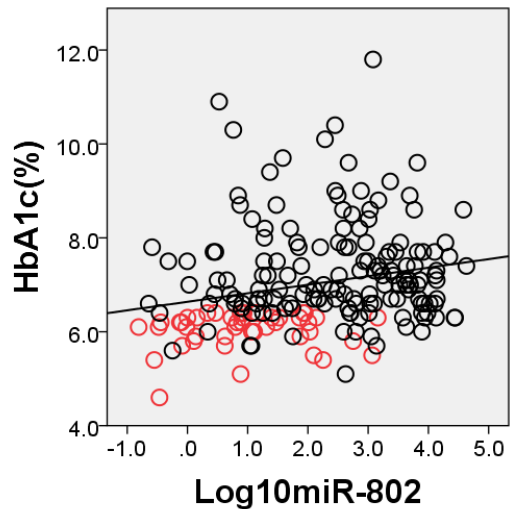
**a**  $R=0.129, P=1.82 \times 10^{-3}, 1-\beta=0.453$  **b**  $R=-0.259, P=4.08 \times 10^{-4}, 1-\beta=0.965$



**c**  $R=0.276, P=8.24 \times 10^{-5}, 1-\beta=0.980$  **d**  $R=-0.271, P=1.20 \times 10^{-4}, 1-\beta=0.977$



**e**  $R=0.293, P=2.49 \times 10^{-5}, 1-\beta=0.990$  **f**  $R=0.248, P=3.78 \times 10^{-4}, 1-\beta=0.950$



o Type 2 diabetes o Normal glucose tolerance