

Legends to figures

Fig. 1 Schematic of apparatus used to measure radon emanated from the sample. (1) Chamber. (2) Sample. (3) Valve. (4) Plastic tube. (5) Air filter. (6) Scintillation cell. (7) Radiation monitor.

Fig. 2 XRD patterns of the samples. (a) Misasa granite. (b) Badgastein granite. In (b), the enhancement of the peaks (open triangle) was observed because crystalline orientation was induced when the powder of the Badgastein granite was fixed to a sample holder.

Fig. 3 Growth curves of the radon concentration in the chamber containing the samples. Solid and dashed lines show the fitting curves to a series of the measured radon concentrations for the Misasa and Badgastein granites, respectively.

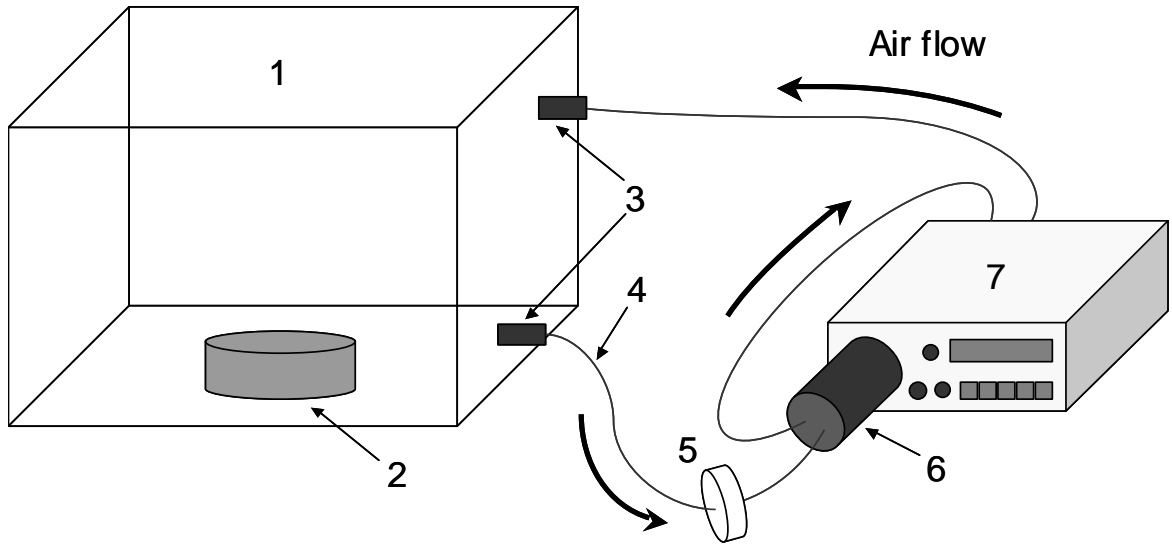


Fig. 1

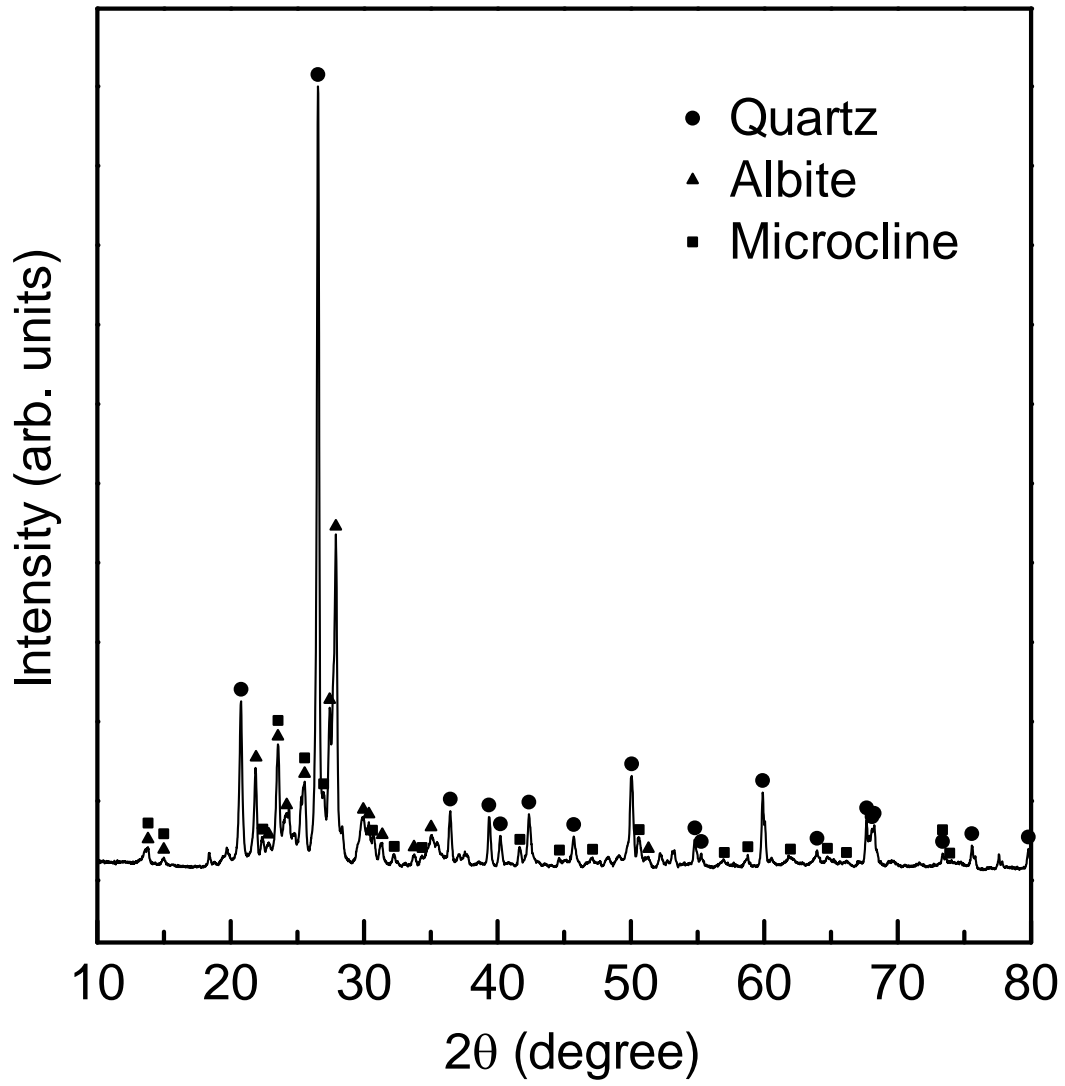


Fig. 2 (a)

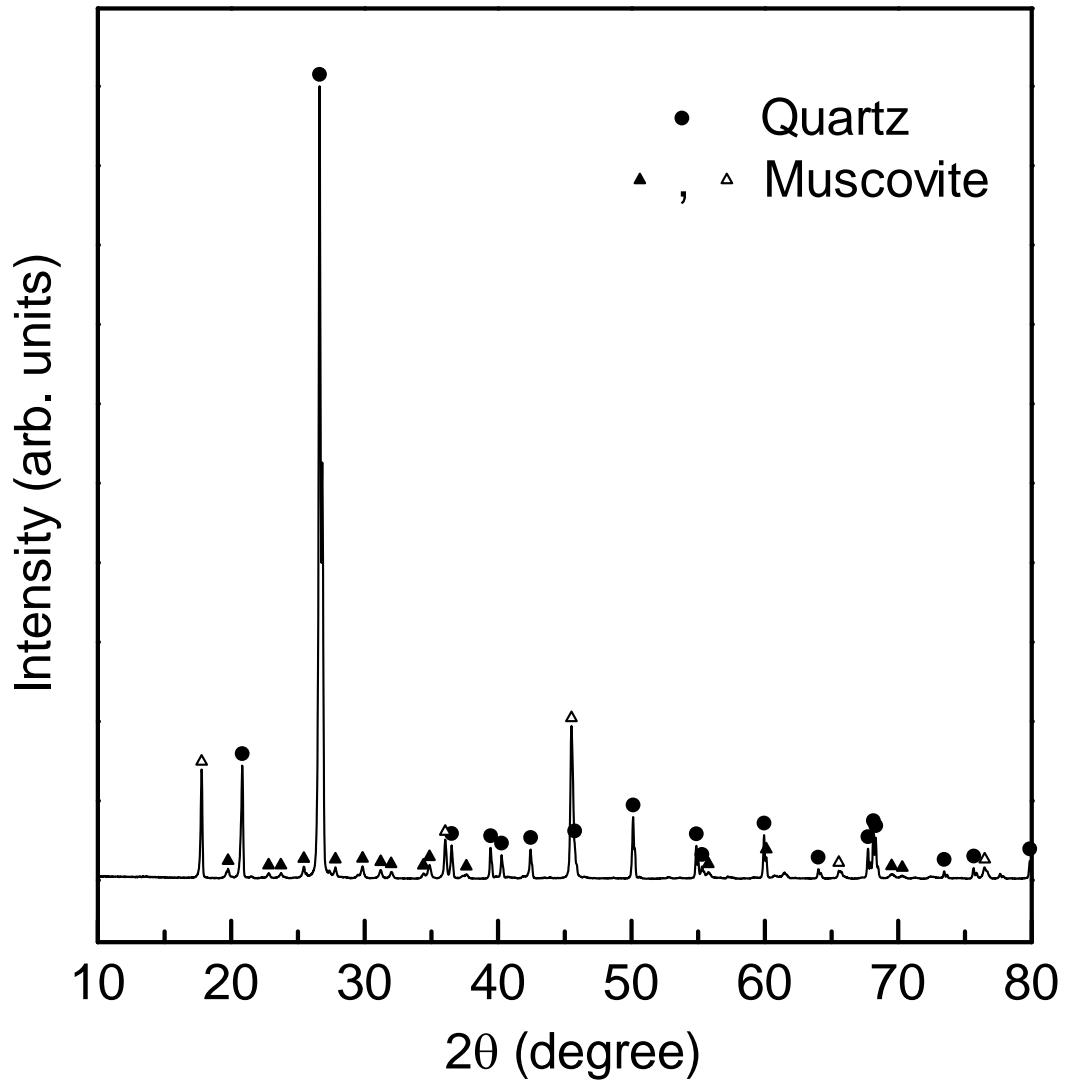


Fig. 2 (b)

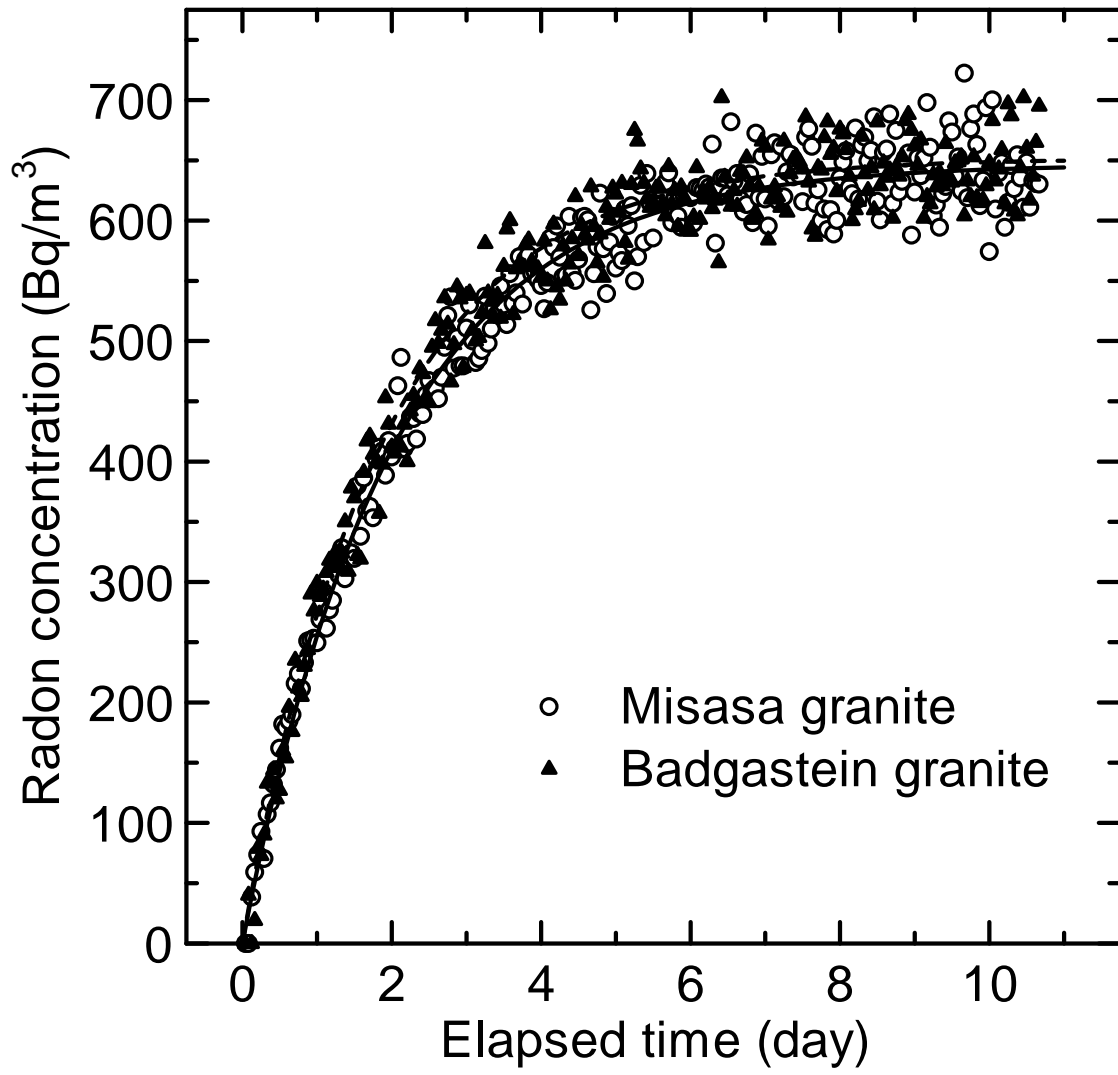


Fig. 3